



DARK GREEN N

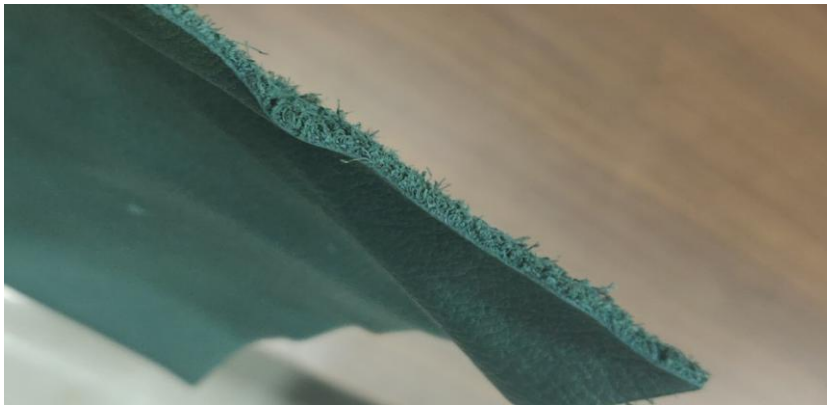
TOP DYEING - 2%



SPLIT - 3%



PENETRATION



60° Solubility	Penetration	Light	F A S T N E S S					
			PERSPIRATION			WASHING		
			CS	SC	SW	CS	SC	SW
60	3	3	2-3	3	3	3	2-3	4

SCALE - 1 TO 5

CS - COTTON + SILK

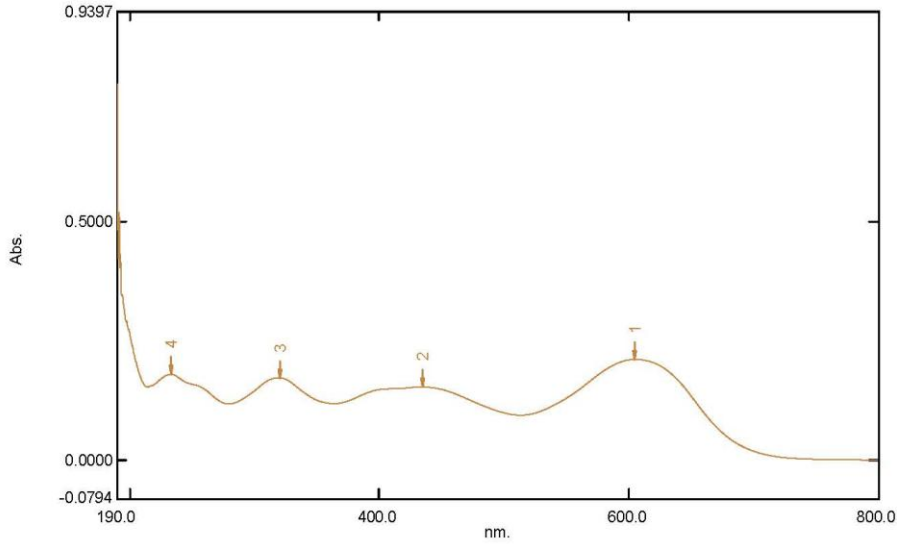
SC - SPUN DIACETATE

SW - SPUN WOOL

Spectrum Peak Pick Report

07-03-2019 04:30:34 PM

Data Set: DARK GREEN N B-2018-112 10PPM - RawData



[Measurement Properties]

Wavelength Range (nm.): 190.0 to 800.0
 Scan Speed: Fast
 Sampling Interval: 0.5
 Auto Sampling Interval: Enabled
 Scan Mode: Single

No.	P/V	Wavelength	Abs.	Description
1	●	605.5	0.2105	
2	●	435.0	0.1523	
3	●	320.5	0.1720	
4	●	233.0	0.1793	

[Instrument Properties]

Instrument Type: UV-1900 Series
 Measuring Mode: Absorbance
 Slit Width: 1.0 nm
 Light Source Change Wavelength: 340.8 nm
 S/R Exchange: Normal

[Attachment Properties]

Attachment: None

[Operation]

Threshold: 0.0010000
 Points: 4
 InterPolate: Disabled
 Average: Disabled

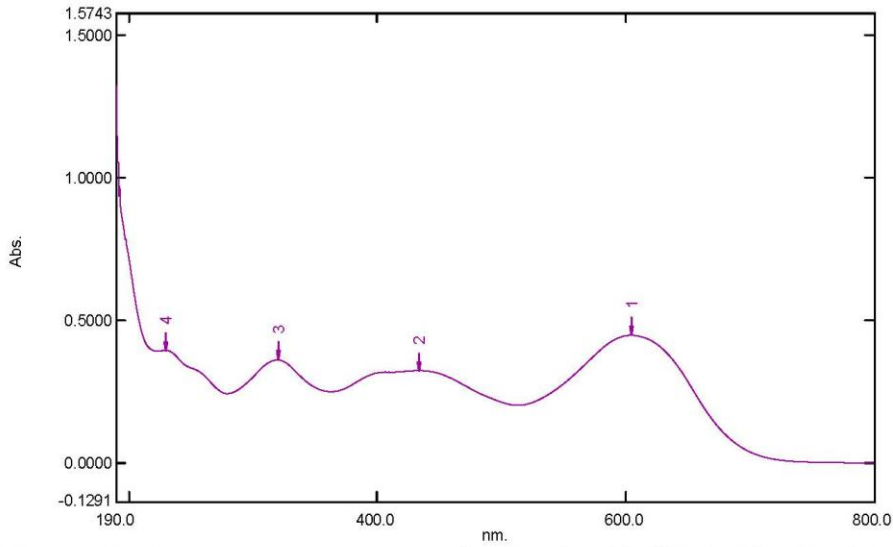
[Sample Preparation Properties]

Weight: 0.1
 Volume: 100
 Dilution: 10 ppm
 Path Length:
 Additional Information:

Spectrum Peak Pick Report

07-03-2019 04:22:49 PM

Data Set: DARK GREEN N B-2018-112 20PPM - RawData



[Measurement Properties]

Wavelength Range (nm.): 190.0 to 800.0
 Scan Speed: Fast
 Sampling Interval: 0.5
 Auto Sampling Interval: Enabled
 Scan Mode: Single

No.	P/V	Wavelength	Abs.	Description
1	●	605.0	0.4488	
2	●	434.0	0.3252	
3	●	320.5	0.3623	
4	●	230.0	0.3963	

[Instrument Properties]

Instrument Type: UV-1900 Series
 Measuring Mode: Absorbance
 Slit Width: 1.0 nm
 Light Source Change Wavelength: 340.8 nm
 S/R Exchange: Normal

[Attachment Properties]

Attachment: None

[Operation]

Threshold: 0.0010000
 Points: 4
 InterPolate: Disabled
 Average: Disabled

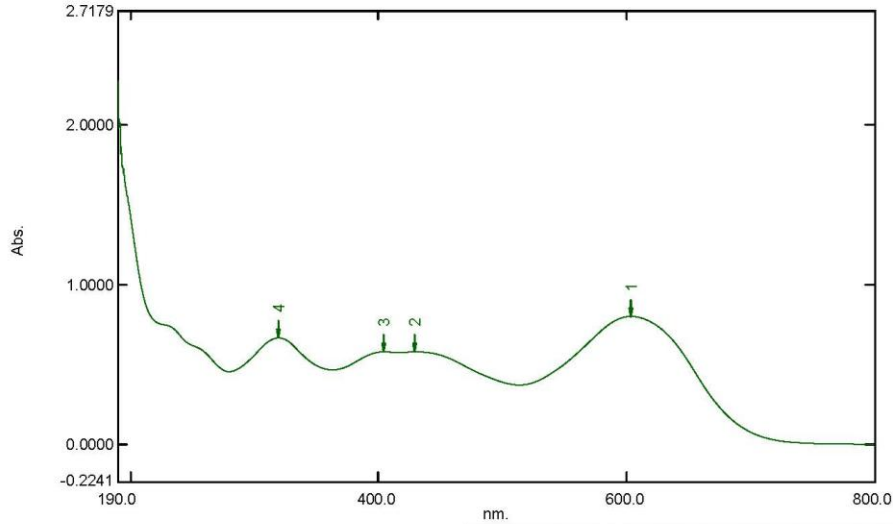
[Sample Preparation Properties]

Weight: 0.1
 Volume: 100
 Dilution: 20 ppm
 Path Length:
 Additional Information:

Spectrum Peak Pick Report

07-03-2019 04:22:00 PM

Data Set: DARK GREEN N B-2018-112 40PPM - RawData



[Measurement Properties]

Wavelength Range (nm.): 190.0 to 800.0
 Scan Speed: Fast
 Sampling Interval: 0.5
 Auto Sampling Interval: Enabled
 Scan Mode: Single

No.	P/V	Wavelength	Abs.	Description
1	●	604.0	0.8047	
2	●	429.5	0.5822	
3	●	404.5	0.5831	
4	●	319.5	0.6693	

[Instrument Properties]

Instrument Type: UV-1900 Series
 Measuring Mode: Absorbance
 Slit Width: 1.0 nm
 Light Source Change Wavelength: 340.8 nm
 S/R Exchange: Normal

[Attachment Properties]

Attachment: None

[Operation]

Threshold: 0.0010000
 Points: 4
 InterPolate: Disabled
 Average: Disabled

[Sample Preparation Properties]

Weight: 0.1
 Volume: 100
 Dilution: 40 ppm
 Path Length:
 Additional Information: